



SPECIFICATIONS

CIRCUIT: SPST

FUNCTION: MOMENTARY

CONTACT RATING: 1~50mA @ 5V~24VDC (resistive load)

OPERATING FORCE: Standard Force: 170 ± 40gf
High Force : 260 ± 50gf

TOTAL TRAVEL: 0.25 +0.2/-0.1mm

ELECTRICAL LIFE:

170gf (standard force): 500,000 operations min.

260gf (high force) : 300,000 operations min.

CONTACT RESISTANCE: 100 mΩ max. (initialvalue)

INSULATION RESISTANCE: 100 MΩ min.

DIELECTRIC STRENGTH: 500 RMS @ sea level.

OPERATING TEMPERATURE: -25°C to 70°C.

MATERIALS

CASE: PBT(UL94V-0).

HOUSING: PBT(UL94V-0).

ACTUATOR: PC

TERMINAL/CONTACT: Brass,silver plated.



HOW TO ORDER

KT — [] — [] — [] — [] — [] — [] — []

Cap size
0 10x10mm

Cap color

ITEM NO	COLOR
Single Color Led	
0	Transparent (Std)
1	Milky white (Std)
3	Red
4	Orange
6	Green
7	Blue
Dual Color Led	
0	Transparent (Std)
1	Milky white (Std)

* Besides standard color, other colors need to check stocks available.

Led Q'ty

ITEM NO	COLOR
Single Color Led	
0	Without Led
1	One Led
Dual Color Led	
2	Two Led

Contact material
Q Silver

Led brightness
0 Without LED
Single Color LED only
A Super Brightness

Operating force
1 Standard
2 High force

Text combinations

Text combinations	LED color
Single Color Led	
0	Without text combinations
Dual Color Led	
0	Without text combinations
1	"OFF" and "ON"
2	"切" and "入" (close) (open)
3	"X" and "O"

Dual Color LED has only "B" and "G" options

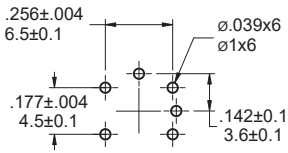
Led color

ITEM NO	COLOR
Single Color Led	
0	Without Led
1	White
3	Red
5	Yellow
6	Green
7	Blue
Dual Color Led	
B	Red+Blue
G	Red+Green
Without text combinations	
C	Yellow+Green
D	Yellow+Red
F	Blue+Green

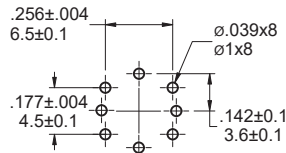
Example:
Single Color Led: KTA-0113Q-A10
Dual Color Led:
KTA-002BQ-A11(text combinations)
KTA-002CQ-A10(Without text combinations)

P.C.B MOUNTING / CIRCUIT

P.C.B MOUNTING

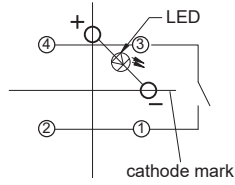


Single Color Led
TOP VIEW

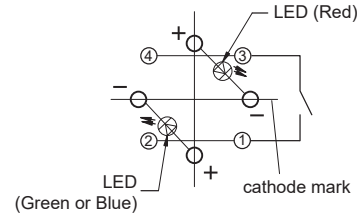


Dua Color Led
TOP VIEW

CIRCUIT



Single Color Led
TOP VIEW

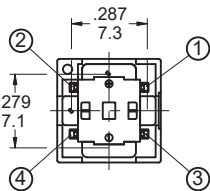
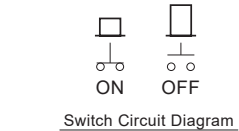
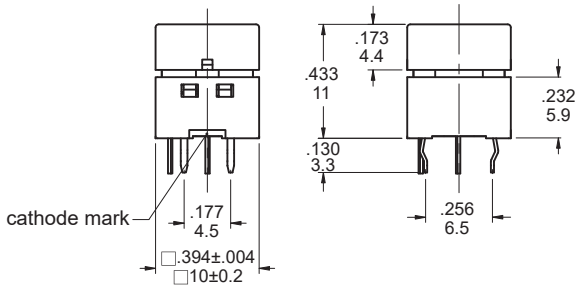
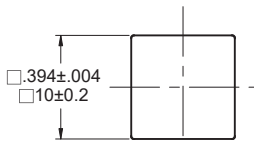


Dua Color Led
TOP VIEW

DIMENSION



Part No. Shown: KTA-011□Q-A10



Part No. Shown: KTA-002GQ-A13

