



#### SPECIFICATIONS

**RATING MIN/MAX:** 0.1mA-100mA, 20VDC-32VDC

**MAX POWER:** 1.0VA

**CONTACT RESISTANCE:** 150mΩ MAX

**INSULATION RESISTANCE:** 100MΩ min, 500VDC

**DIELECTRIC STRENGTH:** 250VAC for 1 Minute

**OPERATING LIFE:** 25,000 cycles

**OPERATING TEMPERATURE:** -40°C~85°C at 96% RH Max

**OPERATING FORCE:** 400±120gf

**TOTAL TRAVELS:** 2.4mm±0.3

#### MATERIALS

**CASE:** LCP

**ACTUATOR:** Polycarbonate

**SPACER:** Silicon

**CONTACT / TERMINALS:** Silver plate stainless / Gold plated brass



### HOW TO ORDER

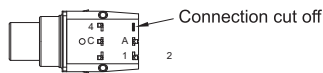


Model No.  
**HRPS** Standard  
**HRPSA** Snap

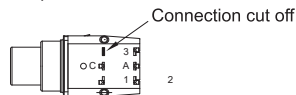
ITEM NO	COLOR
00	Without LED
01	White
03	Red
06	Green
07	Blue
0A	Amber
DUAL COLOR LED	
36	Red&Green
56	Yellow&Green
7A	Blue&Amber

Maintain  
**12** Put on black CAP  
**02** Black lamp (Non-LED)

**A** Cut the pin 3 terminal

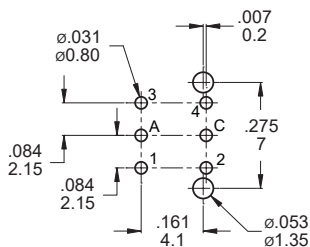


**B** Cut the pin 4 terminal



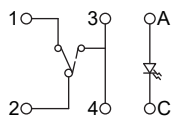
### P.C.B MOUNTING / CIRCUIT

#### P.C.B. LAYOUT

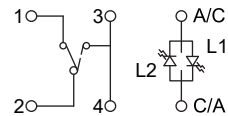


TOP VIEW

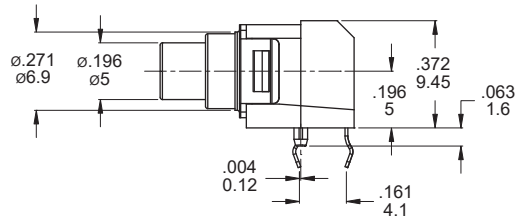
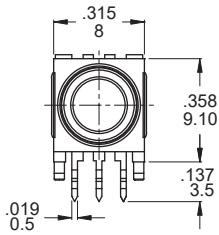
#### CIRCUIT



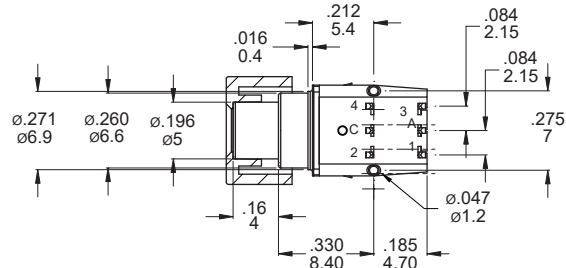
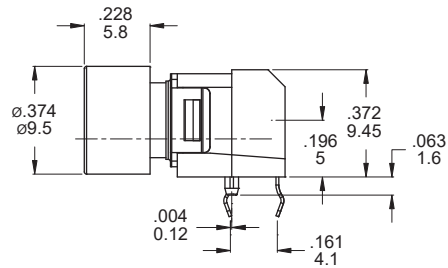
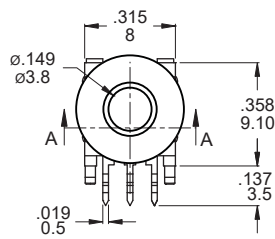
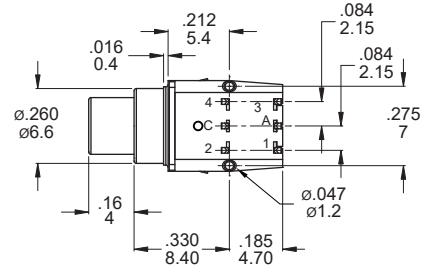
Single Color LED



Bi-Color LED

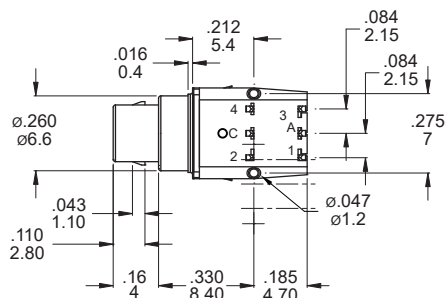
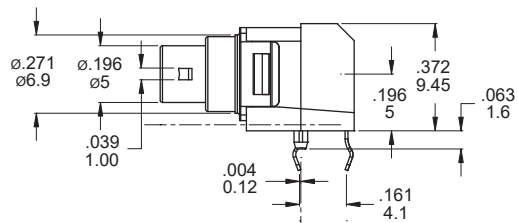
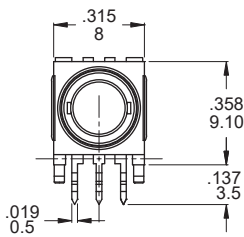


Part No. Shown : HRPS-□□



SECTION A-A

Part No. Shown : HRPS-□□-12



Part No. Shown : HRPSA-□□